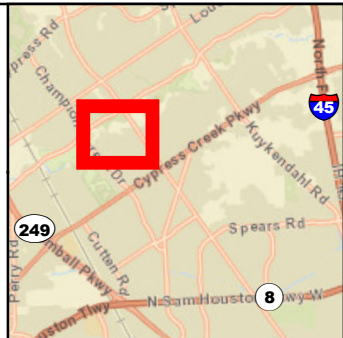


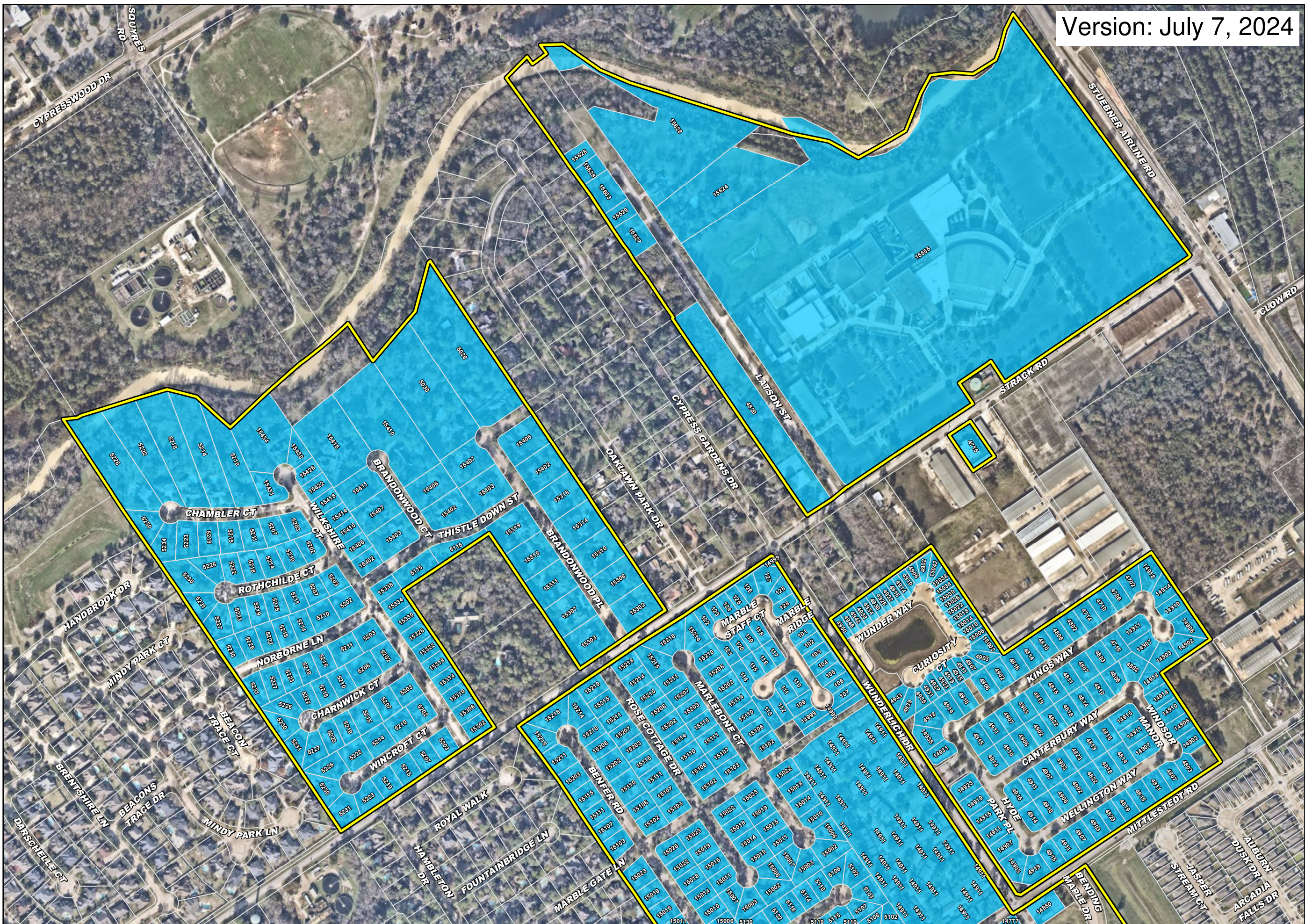
Version: July 7, 2024



VICINITY MAP
1 INCH = 5 MILES

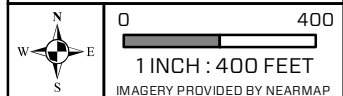
LEGEND

- District Boundary
- Non-Lead
- HCAD Parcels



LSLI FIELD VERIFICATIONS EXHIBIT 1

HEATHERLOCH M.U.D.
HARRIS COUNTY, TEXAS



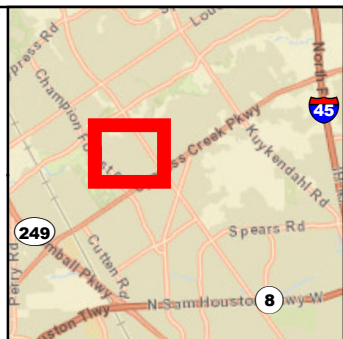
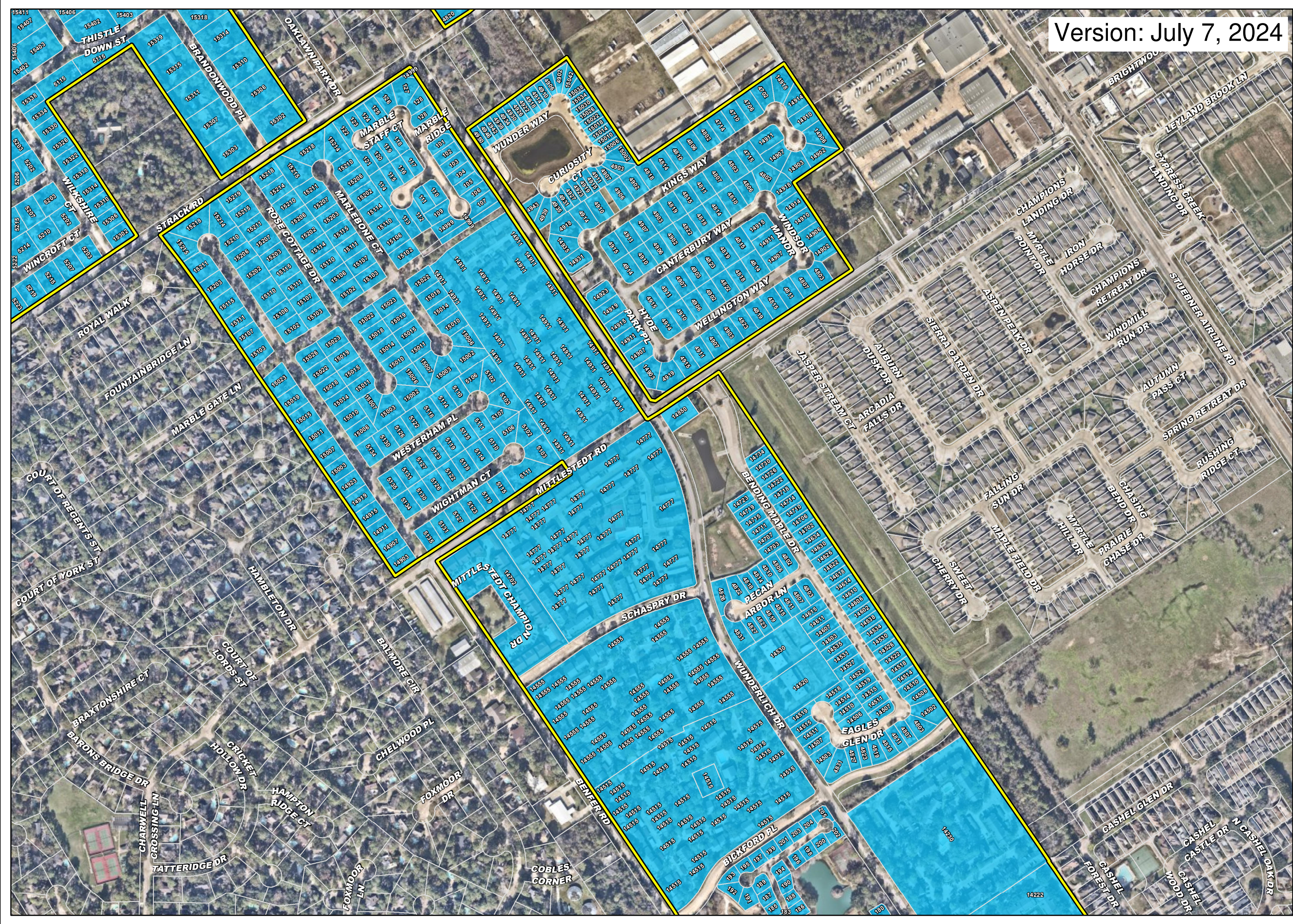
Disclaimer: This product is offered for informational purposes and may not have been prepared for or be suitable for legal, engineering, or surveying purposes. It does not represent an on-the-ground survey and represents only the approximate relative location of property, governmental and/or political boundaries or related facilities to said boundary. No express warranties are made by Quiddity Engineering concerning the accuracy, completeness, reliability, or usability of the information included within this exhibit.



Texas Board of Professional Engineers Registration No. F-23290

Path: V:\Practice Workspaces\Corporate Services\GIS\Projects\00030-106-00-001-03_HeatherlochMUD\VRITS\LSLI_Field_Verifications_EX1\1x17.mxd Date: 6/7/2024 User: Nameless

Version: July 7, 2024

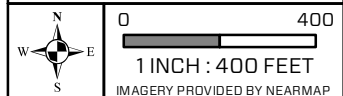


VICINITY MAP
1 INCH = 5 MILES

- LEGEND
- District Boundary
 - Non-Lead
 - HCAD Parcels

LSLI FIELD VERIFICATIONS EXHIBIT 2

HEATHERLOCH M.U.D.
HARRIS COUNTY, TEXAS



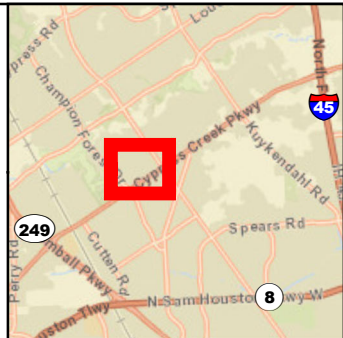
Disclaimer: This product is offered for informational purposes and may not have been prepared for or be suitable for legal, engineering, or surveying purposes. It does not represent an on-the-ground survey and represents only the approximate relative location of property, governmental and/or political boundaries or related facilities to said boundary. No express warranties are made by Quiddity Engineering concerning the accuracy, completeness, reliability, or usability of the information included within this exhibit.



Texas Board of Professional Engineers Registration No. F-23290

Path: V:\Practice\Workspaces\Corporate Services\GIS\Projects\00030-106-00-00-03_HeatherlochMUD\VR\LSLI_Field_Verifications_EX2_7x17.mxd User Name: lsl Date: 6/7/2024

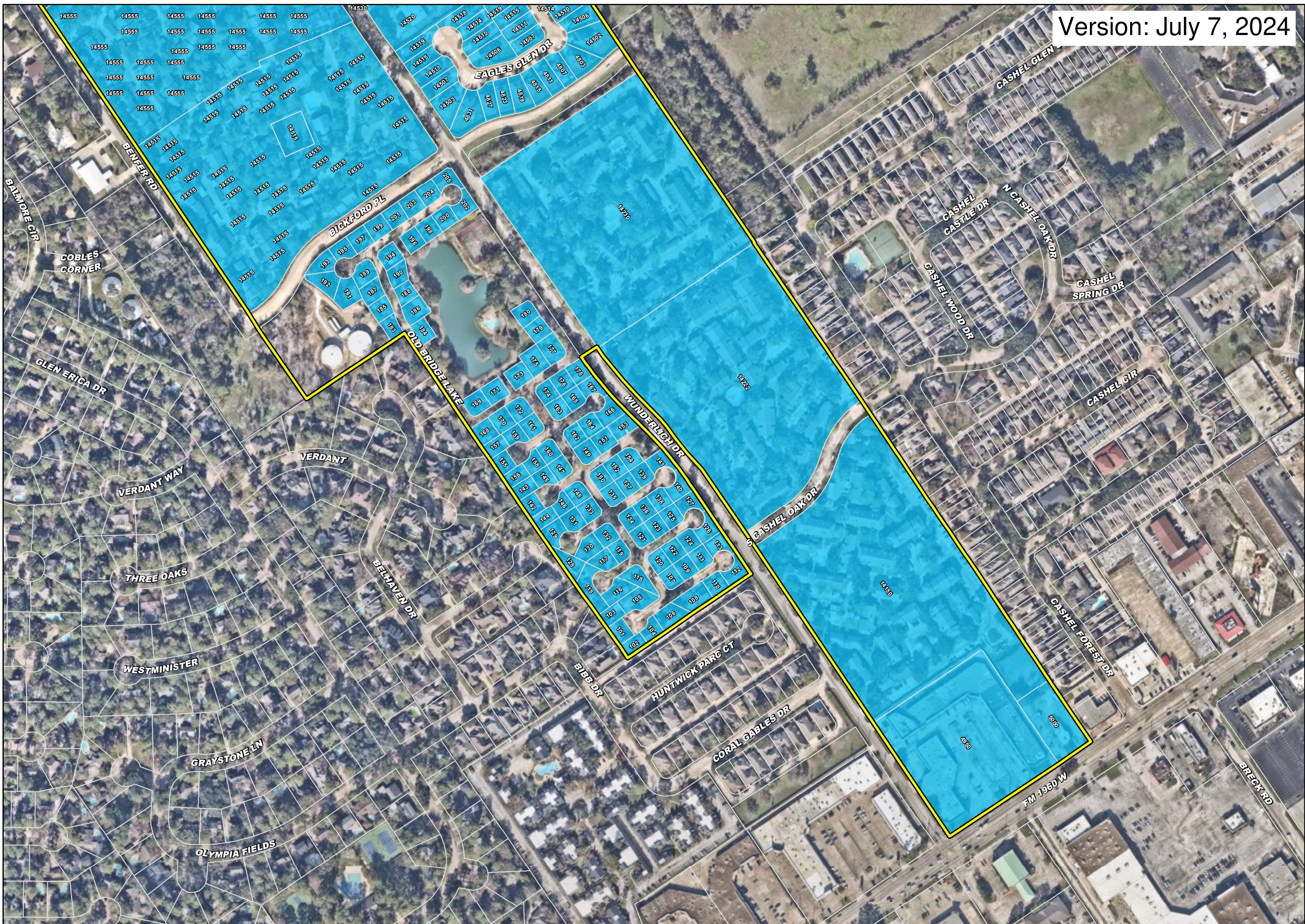
Version: July 7, 2024



VICINITY MAP
1 INCH = 5 MILES

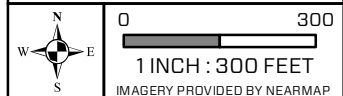
LEGEND

- District Boundary
- Non-Lead
- HCAD Parcels



LSLI FIELD VERIFICATIONS EXHIBIT 3

HEATHERLOCH M.U.D.
HARRIS COUNTY, TEXAS



Disclaimer: This product is offered for informational purposes and may not have been prepared for or be suitable for legal, engineering, or surveying purposes. It does not represent an on-the-ground survey and represents only the approximate relative location of property, governmental and/or political boundaries or related facilities to said boundary. No express warranties are made by Quiddity Engineering concerning the accuracy, completeness, reliability, or usability of the information included within this exhibit.



Texas Board of Professional Engineers Registration No. F-23290

Path: V:\Practice Workspaces\Corporate Services\GIS\Projects\000300-106-00-00-01-03_HeatherlochMUD\VRITS\LSLI_Field_Verifications_EX3_T1x7.mxd Project Number: 000300-106-00-00-01-03 Date: 6/7/2024 User Name: lra